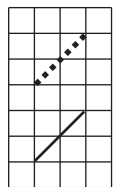
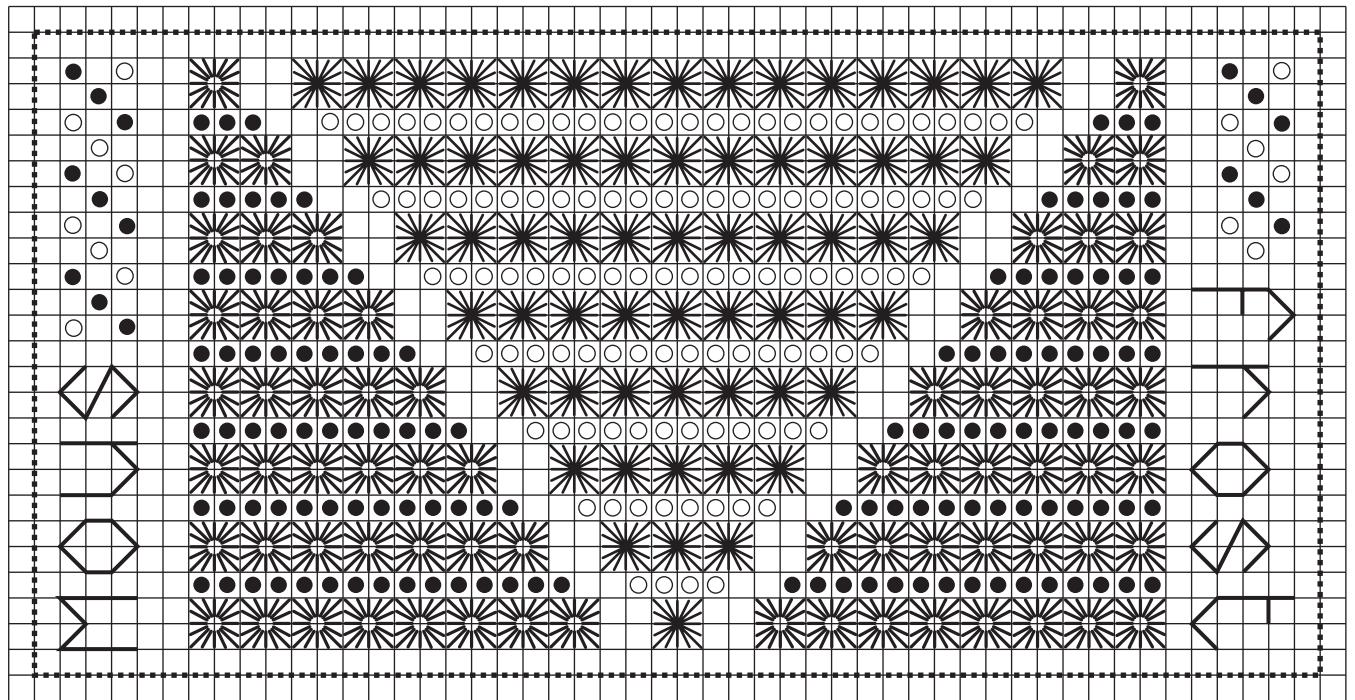
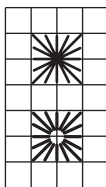


# Snow and Frost Humbug



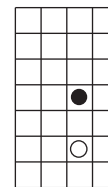
## Backstitch

Backstitch to match fabric colour  
Frosty blue backstitch



## Specialty Stitches

Frosty blue Rhodes squares  
Frosty pink / lilac Algerian eyelets



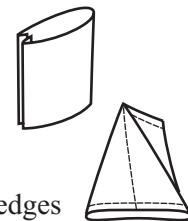
## Seed Beads or French Knots

Frosty blue / white  
Frosty pink / lilac

Size: 50w x 25h

To create your humbug

- ❖ Backstitch around design (following the chart)
- ❖ Whip stitch the two short edges together (so that your design now creates a tube)
- ❖ Pinch the top of the tube together and whipstitch the edges
- ❖ Pinch the bottom of the tube together at 90 degrees to the top and whip stitch the edges



This design is copyright to Kell Smurthwaite and Kincavel Krosses

You may use, copy and/or share this design, and you may change it to your liking for your own use

You may not sell this design or use it to make up kits

You may sell the finished piece for charity, but you may not sell it commercially

<http://kincavelkrosses.wordpress.com/>

Adapted from Kell Smurthwaite, December 2010