

Marigold Guild of Needle Arts

February 2015 Hands-on Program
Pre-meeting Work

Waffle Stitch Scissor Fob

Finished size approx 1 3/4" x 1 3/4"

Supplies:

3" x 5" piece 18-count Mono Canvas

5 yards of Pearl Cotton or metallic braid
for Tent Stitch grid and assembly

9 single one-yard pieces of Watercolor
Thread or Pearl Cotton (each piece will
do two Waffle Stitches)

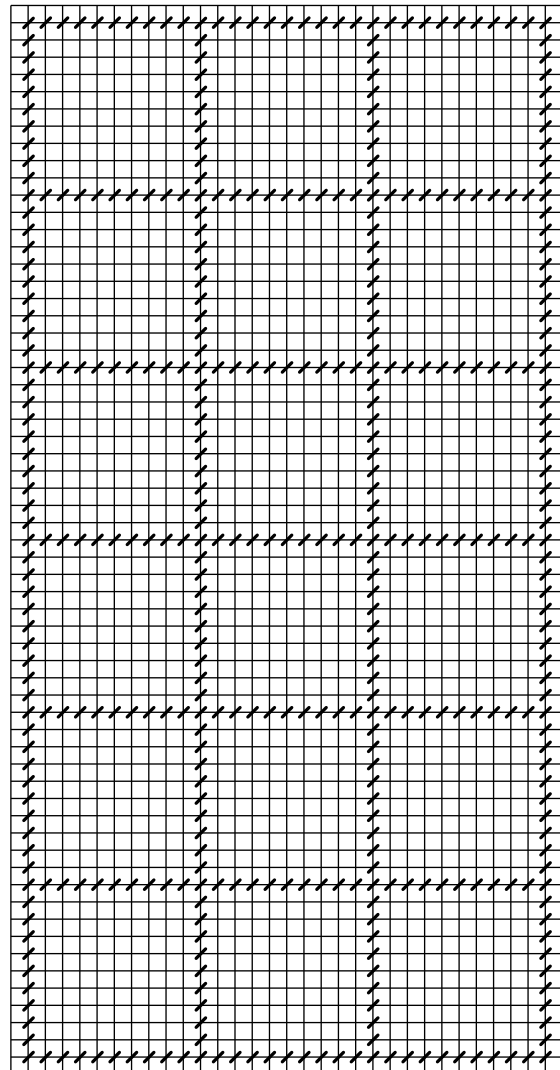
4 half-yard pieces of Pearl cotton or
Watercolor thread for Twisted Cord

Directions

1. Complete the Tent Stitch Outline as
in first diagram, counting carefully,
using a plain Pearl Cotton or metallic.
There will need to be at least four
canvas threads outside the stitching on
all sides. The centre horizontal line (*)
will be the fold-line when the Fob is
assembled. (Two rows can be stitched
here if you wish.)

2. To be continued...

Tent Stitch Outline Grid



*Stitch
2 rows
here

