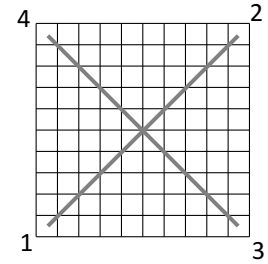


Waffle Stitch

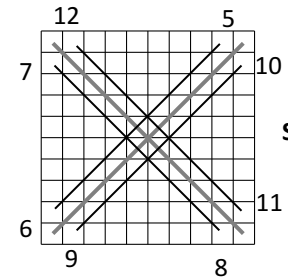
The Waffle Stitch, also known as the Norwich Stitch, is a counted thread stitch. It can be sized to fit any square area. As the stitches are layered, it produces a diamond pattern in the center. It can be done with solid-colored thread, but using an over-dyed thread will create a more dramatic effect. The stitch is usually done over an odd number of threads, but it can be done over an even number if the last "round" of stitches is modified slightly.

Step 1: Numbers 1-4. Begin the first two stitches by coming up at 1, with a large cross stitch over the desired number of canvas threads (over 9 shown to the right).



Step 1

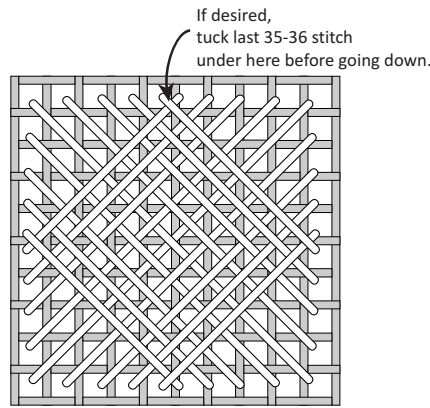
Step 2: Numbers 7-12. The next four stitches start a repetitive pattern. If desired, you could change to another color for effect. One round is now complete.



Step 2

Repeat Step 2, moving one hole closer to the center of each side with each round. So, the second round will start by traveling (on the back) across the top side, and coming up one thread left of #5 of the previous round. You'll be able to see if you are doing it right if all the stitches on the back are on the edges of the square. The number sequence is for reference in case you get lost!

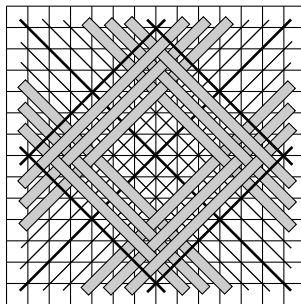
Keep going until the square is filled, changing colors as desired.



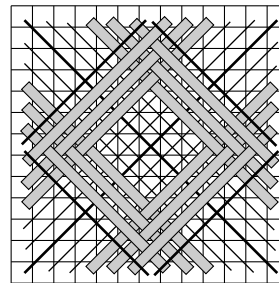
4	12	20	28	36	29	21	13	5	2
7									10
15									18
23									26
31									34
30									35
22									27
14									19
6									11
1	9	17	25	33	32	24	16	8	3

Number Sequence

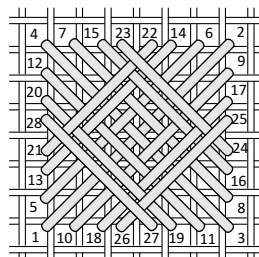
Other Variations:



Multi-color
Over 13 (odd)

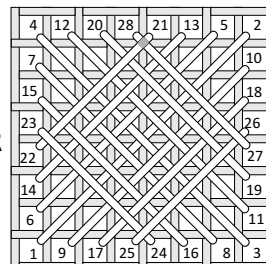


Multi-color
Over 12 (even)
Arms of last round do not overlap so number sequence is not followed.

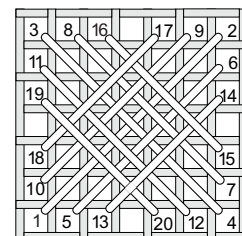


Over 7

OR



Over 7



Over 6